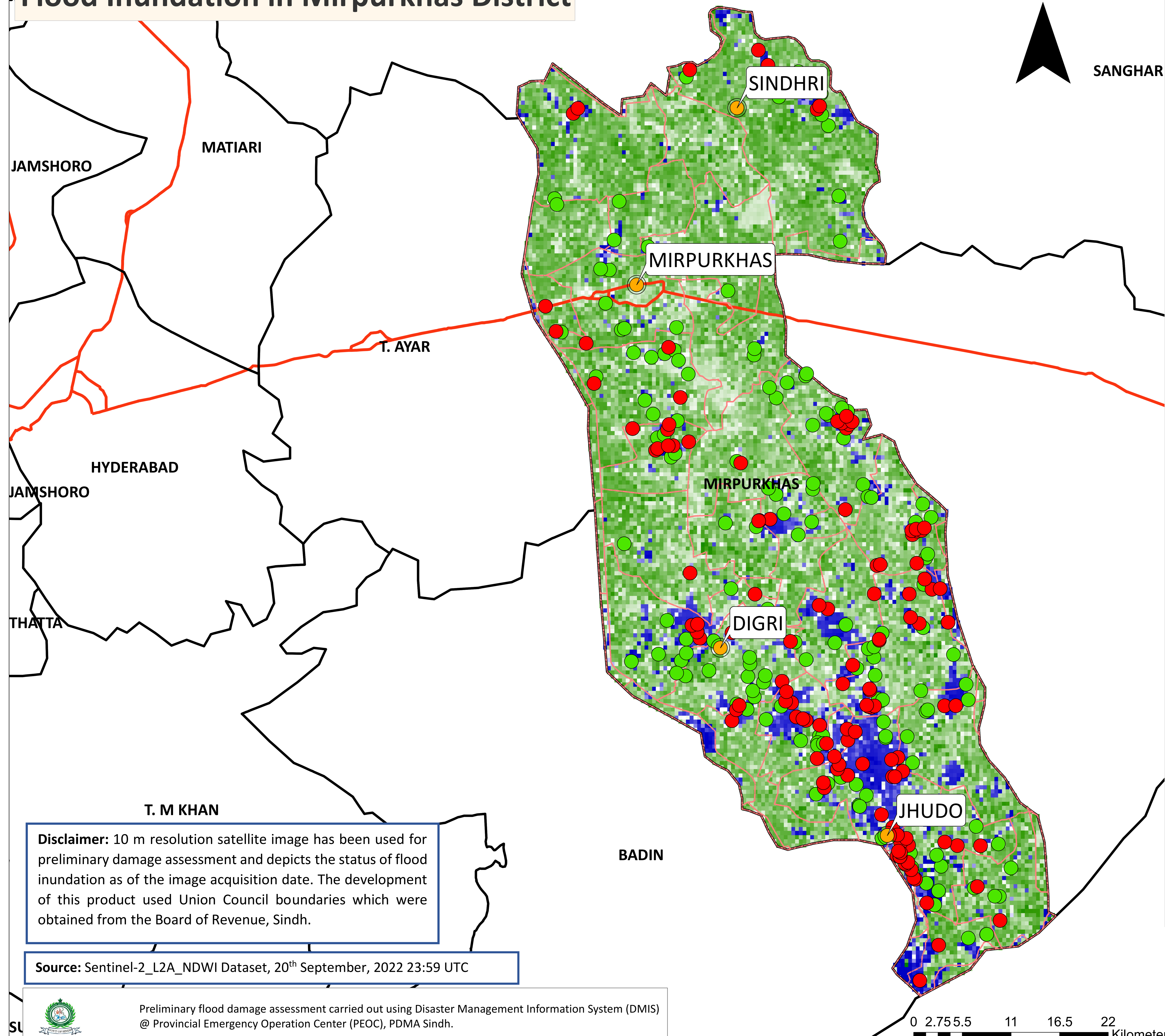


Flood Inundation in Mirpurkhas District



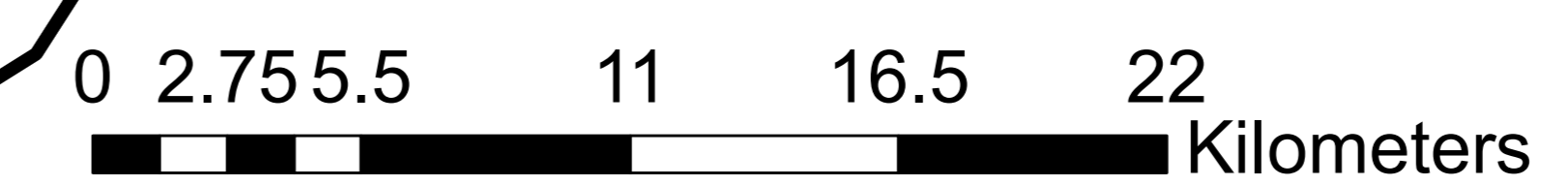
| District Profile | | | |
|---------------------------------|------------------|----------------|------------|
| District Area | 8/28/2022 | 9/5/2022 | Change |
| | 3315.29 Sq.Km | | |
| Area Inundated | 237.16 Sq.Km | 157 Sq.Km | -80.16 |
| | 7.15% | 4.73% | |
| Crop Land | 703,738.47 Acres | | |
| Crop Land Inundated | 52,777.39 Acres | 19440.79 Acres | -33,336.60 |
| | 7.49% | 2.76% | |
| Rainfall (Jul-Aug) | 436 mm | | |
| Population (as per 2017 Census) | 1,492,210 | | |
| Affected Union Councils | 50 Out of 52 | | |

| UC-wise Affected Villages | | | | | | |
|---------------------------|--------------------|-----------|--------|---------------------|-----------|--------|
| Name | Submerged in Water | | | Surrounded by Water | | |
| | 8/28/2022 | 9/20/2022 | Change | 8/28/2022 | 9/20/2022 | Change |
| Ahori | 1 | 3 | +2 | 31 | 9 | -22 |
| Baloch Abad | 1 | 0 | -1 | 40 | 5 | -35 |
| Bharghari | 0 | 2 | +2 | 12 | 8 | -4 |
| BHURGAN | 0 | 3 | +3 | 2 | 3 | +1 |
| BUDHO QAMBRANI | 0 | 1 | +1 | 4 | 0 | -4 |
| DADHA | 0 | 0 | 0 | 1 | 0 | -1 |
| Daulat Pur | 1 | 2 | +1 | 17 | 9 | -8 |
| DUMBALO | 0 | 0 | 0 | +1 | +1 | 0 |
| Degan | 1 | 7 | +6 | 27 | 19 | -8 |
| Dilawar Hussain | 1 | 14 | +13 | 27 | 27 | 0 |
| Fazal Bhambro | 10 | 2 | -8 | 79 | 6 | -73 |
| Haji Hadi Bux | 0 | 9 | +9 | 12 | 13 | +1 |
| HALE POTA | 0 | 0 | 0 | 1 | 0 | -1 |
| Jawariasor | 0 | 14 | +14 | 21 | 26 | +5 |
| JHULURJ | 0 | 0 | 0 | 19 | 2 | -17 |
| Kandiari | 1 | 7 | +6 | 22 | 16 | -6 |
| KOT GHULAM MUHAMMAD | 0 | 0 | 0 | 1 | 1 | 0 |
| Kangoro | 0 | 1 | +1 | 6 | 2 | -4 |
| Khairpur | 0 | 1 | +1 | 6 | 1 | -5 |
| Khan | 0 | 2 | +2 | 18 | 3 | -15 |
| Khirao | 0 | 0 | 0 | 6 | 0 | -6 |
| Khudadad | 1 | 5 | +4 | 9 | 9 | 0 |
| Maherano | 0 | 0 | 0 | 4 | 0 | -4 |
| Makhan Samon | | 3 | +3 | 20 | 12 | -8 |
| Mir Gulam Hussain Talpur | 1 | 1 | 0 | 39 | 4 | -35 |
| Mir Imam Bakhsh | 0 | 1 | +1 | 7 | 3 | -4 |
| Mir Khuda Bakhsh | 0 | 3 | +3 | 17 | 4 | -13 |
| Mir Pur Old | 0 | 1 | +1 | 14 | 6 | -8 |
| Mir Wah | 0 | 8 | +8 | 13 | 14 | +1 |
| Naonabad | 0 | 0 | 0 | 2 | +2 | 0 |
| Nokot | 0 | 2 | +2 | 32 | 5 | -27 |
| Paban | 0 | 5 | +5 | 22 | 12 | -10 |
| Padhrio Farm | 0 | 2 | +2 | 5 | 2 | -3 |
| Pangrio | 0 | 0 | 0 | 5 | 0 | -5 |
| Roshanabad | 2 | 22 | +20 | 78 | 33 | -45 |
| Setharpir | 0 | 0 | 0 | 3 | 0 | -3 |
| Shadi Pali | 0 | 0 | 0 | 2 | 0 | -2 |
| Sofan Shah | 1 | 3 | +2 | 20 | 18 | -2 |
| Talhi | 1 | 0 | -1 | 6 | 0 | -6 |
| Tando Jan Muhammad | 0 | 10 | +10 | 6 | 19 | +13 |
| Turk Ali Muree | 0 | 0 | 0 | 12 | 1 | -11 |
| A | 1 | | | 12 | | |
| Total | 22 | 134 | +112 | +669 | +295 | -374 |

Disclaimer: 10 m resolution satellite image has been used for preliminary damage assessment and depicts the status of flood inundation as of the image acquisition date. The development of this product used Union Council boundaries which were obtained from the Board of Revenue, Sindh.

Source: Sentinel-2_L2A_NDWI Dataset, 20th September, 2022 23:59 UTC

Preliminary flood damage assessment carried out using Disaster Management Information System (DMIS) @ Provincial Emergency Operation Center (PEOC), PDMA Sindh.



- Cities/Towns
- Submerged under Water
- Surrounded by Water
- Union Councils
- Highways